

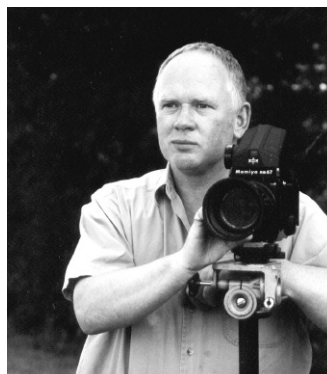
REPRINT DISCOVERING LOST DEVON

THROUGH THE MAGIC LANTERN
PHOTOGRAPHS OF THE COUNTY
FROM THE TREMLETT COLLECTION

Peter Thomas

The wonderful photographs in this book come from a unique collection of recently rediscovered magic lantern slides. At a time when Victoria was queen these photographs were used to entertain eager audiences, just as the cinema entertains us today. Unseen for over a hundred years, this superb collection is again brought to public view, reminding us of what we have lost in Devon.

Over 200 photographs show just how much has changed in the intervening years, not only in Devon's countryside but how much change there has been in our towns and villages too. Anyone who has a passion for the county's past, or who has a love of old photographs and local history, will find much to entertain and interest them. Author, Peter Thomas, has also included a chapter on the history and use of the magic lantern. In *Discovering Lost Devon* he records how he came across the exceptional series of photographs which comprise the Tremlett Collection of magic lantern slides.



ABOUT THE AUTHOR

Peter Thomas is owner of one of the county's most extensive historic photographic archives – the Isca Collection. He is the author of many books based on the collection and has contributed widely to magazines and exhibitions throughout Devon. His books for Halsgrove include *Exeter – The Golden Years* and *The Exeter Blitz*.

RELATED TITLES AVAILABLE

Perfect Devon

ISBN 978 1 84114 714 7 £14.99

Grave Robbers &

Bodysnatchers in Devon

ISBN 978 1 84114 855 7 £8.99

North Devon Coast from the Air

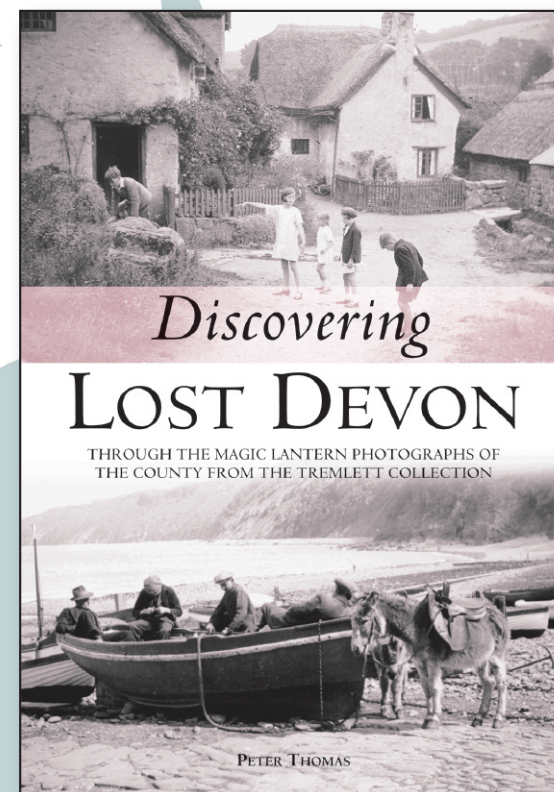
ISBN 978 1 84114 706 2 £14.99

Blame it on the Devon Vicar

ISBN 978 1 84114 861 8 £8.99

Halsgrove Publishing
Halsgrove House,
Ryelands Industrial Estate,
Bagley Road, Wellington,
Somerset TA21 9PZ
Tel: 01823 653777
Fax: 01823 216796
www.halsgrove.com
e-mail: sales@halsgrove.com

HALSGROVE TITLE INFORMATION



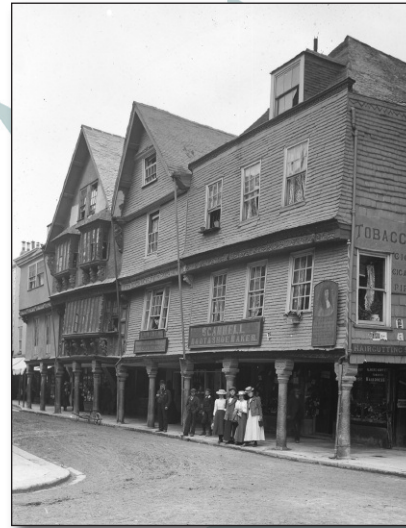
Format: Hardback, 160 pages, 210x297mm, including over 300 black and white photographs
Price: RRP £19.99 **promotional reprint price £9.99**
ISBN: 978 1 84114 427 6
Imprint: Halsgrove
Published: Originally published 2005, first reprint March 2009

Halsgrove Sales Contacts:
Sue Rhodes-Thompson – DDI 01823 653770 suet@halsgrove.com
Roger Start – DDI 01823 653773 rogers@halsgrove.com
Helen Deakin – DDI 01823 653772 helend@halsgrove.com
Marie Lewis – DDI 01823 653771 mariel@halsgrove.com
Andrew Stirling – Mobile 07971 572468 andrews@halsgrove.com
Credit card sales – DDI 01823 653760/653777





A delightful record of the post office at Bickleigh.



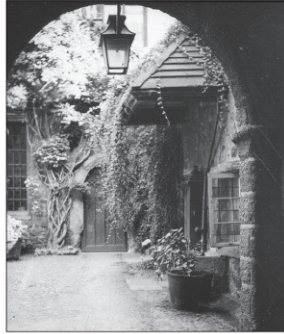
The Butterwalk, Duke Street, Dartmouth, South Devon.



Local fishermen and donkeys rest on the pebbled beach. To the right is seen Crazy Kate's Cottage, said to be the oldest cottage in Clovelly.


Example of a double page spread

DISCOVERING LOST DEVON





In Exeter's Cathedral Close remains a charming group of buildings known as the Quadrangle. It is entered by a fine studded wooden door of c.1600. The group of buildings, used for ecclesiastical purposes, comprises what was once a selectory, buttery, kitchen, offices, hall and chapel that form the sides of a courtyard. Parts of these buildings can be traced back to the fourteenth century. Despite changes throughout the centuries, this complex still retains its old-world charm. The courtyard still has an ancient hand-pump with a large stone trough, and a Tudor doorway over which are the arms of Bishop Okham who lived in the reign of Henry VIII. The courtyard is particularly well known for its magnificent ysters.

EXETER



Around 1895 Alan Trimmitt recorded one of the city's finest buildings, Mo's Coffee House in the Cathedral Close. At this time it was occupied by Messrs Worth & Co., an art gallery, framers and picture restorers. The company produced a great number of historical images of Exeter for retail sale and promoted local artists. Worth's were particularly noted for their postcards and Mr Worth took a special interest in his building and published his findings in a city guide. He concluded that it had once been used as a club under royal authority up until 1836. Hence the royal coat of arms on the front of the building. The original was later removed and a painted replica made. On the first floor of this sixteenth-century building is the panelled oak room displaying heraldic coats of arms relating to famous Devon families including Drake and Raleigh. The name, 'MO' is a reference to an early Italian owner. Worth & Co. promoted the history of their building with a large decorative board stating: '1596 Elizabethan oak panelled room, the meeting place of our naval and military generals who fought the Spanish Armada. Open free to visitors daily.' Above this board is written: 'Formerly Mo's Coffee House'. The decorative gable and balcony were much later additions to the building.

One of Exeter's finest architectural treasures is the door to No.10 The Close. It is one of a few rare early doors in Exeter dating from c.1600. The massive studded oak door is beautifully carved and features a smaller central wicket door that allowed only pedestrians to enter the courtyard. The whole door could be opened to allow a horse and carriage to enter.

This excellent study of Exeter Quay is taken from Haven Banks beside the ferry.

